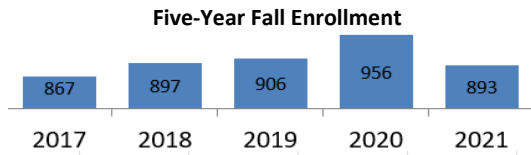


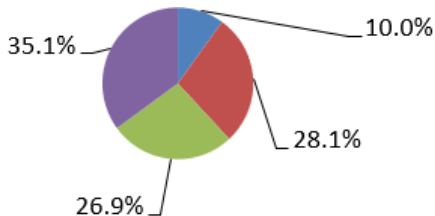
University of North Dakota

Student Profile of New Transfers - Fall 2021

Enrollment	Men	Women	Total	Percent (%)
Part-Time	219	163	32	42.8%
Full-Time	273	238	511	57.2%
Total	492	401	893	100.0%



Classification	Men	Women	Total	Percent
Freshmen	54	35	89	10.0%
Sophomores	135	116	251	28.1%
Juniors	129	111	240	26.9%
Seniors	174	139	313	35.1%
Total	492	401	893	100.0%

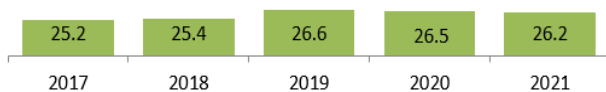


Enrollment Type & Credit Hour Production	Enrollment Type		Credit Hour	
	Total	Percent	Total	Percent
Full-Time	511	57.2%	7,198	73.0%
Part-Time	382	42.8%	2,664	27.0%
Total	893	100.0%	9,862	100.0%

Race/Ethnicity	Total	Percent
2 or more races	44	4.8%
American Indian	23	2.6%
Asian	28	3.1%
Black	50	5.6%
Hawaiian	2	0.2%
Hispanic	72	8.1%
Not Specified	11	1.2%
Non-resident Alien	43	4.8%
White	620	69.4%
Total	893	100.0%

AGE	Total	Percent
Under 18	2	0.2%
18-19	142	15.9%
20-21	208	23.3%
22-24	157	17.6%
25-29	142	15.9%
30-34	98	11.0%
35-39	72	8.2%
40-49	58	6.5%
50-64	14	1.6%
Total	893	100.00%

Average Age For Last Five Years



Average Incoming GPA	3.10
Average # of Credits Transferred into UND	74.13
Avg # of credits enrolled in first semester	11

Enrollment by College	Total	Percent
Arts & Sciences	168	18.8%
Aerospace Sciences, JDO	82	9.7%
Business & Public Administration	87	9.7%
Engineering & Mines	318	35.6%
Nursing	81	9.2%
Medicine & Health Science	99	11.1%
Education & Human Development	58	6.5%
Total	893	100.0%

Highest Enrolled Program Areas	Total	Percent
Engineering	287	32.14%
Health Professions	152	17.02%
Aviation	88	9.85%
Business	68	7.61%
Public Admin & Social Serv Prof	43	4.82%
Psychology	42	4.70%
Education	38	4.26%
CompInfoSci	30	3.36%
Humanities	24	2.69%
Parks, Rec, Leisure, & fitness studies	19	2.13%
Law Enforcement	19	2.13%
Biological & biomed sciences	16	1.79%
Social Sciences	16	1.79%
Communication/Journalism	15	1.68%
Physical Sciences	12	1.34%
Visual & Performing Arts	8	0.90%
English	6	0.67%
CulturalStudies	3	0.34%
ForeignLang	3	0.34%
Family & consumer sci/human sci	2	0.22%
History	2	0.22%
Total	893	100.0%

Residency*	Total	Percent
North Dakota	229	25.6%
North Dakota Military	138	15.4%
Minnesota	58	6.4%
Contiguous St/Prv	32	3.6%
WUE/WICHE	90	10.1%
Non-Resident	159	17.8%
MHEC States	157	17.6%
ND Grad/ Alum Dep	4	0.4%
INTER	26	2.9%
Total	893	100.0%

*References "Residency Code" field on Student Data System

WUE/WICHE: Alaska, Arizona, California, Colorado, Hawaii, Idaho, Montana, Nevada, New Mexico, Oregon, Utah, Washington, Wyoming; Saskatchewan, Manitoba

MHEC States: Illinois, Indiana, Kansas, Michigan, Missouri, Nebraska, Wisconsin

Source: Official Data (4thweek)/Fact Book

Prepared by: Office of University Analytics & Planning

File: s:\profiles\new student profiles\2021\2021 New Freshmen.pub.

Date: December 22, 2021